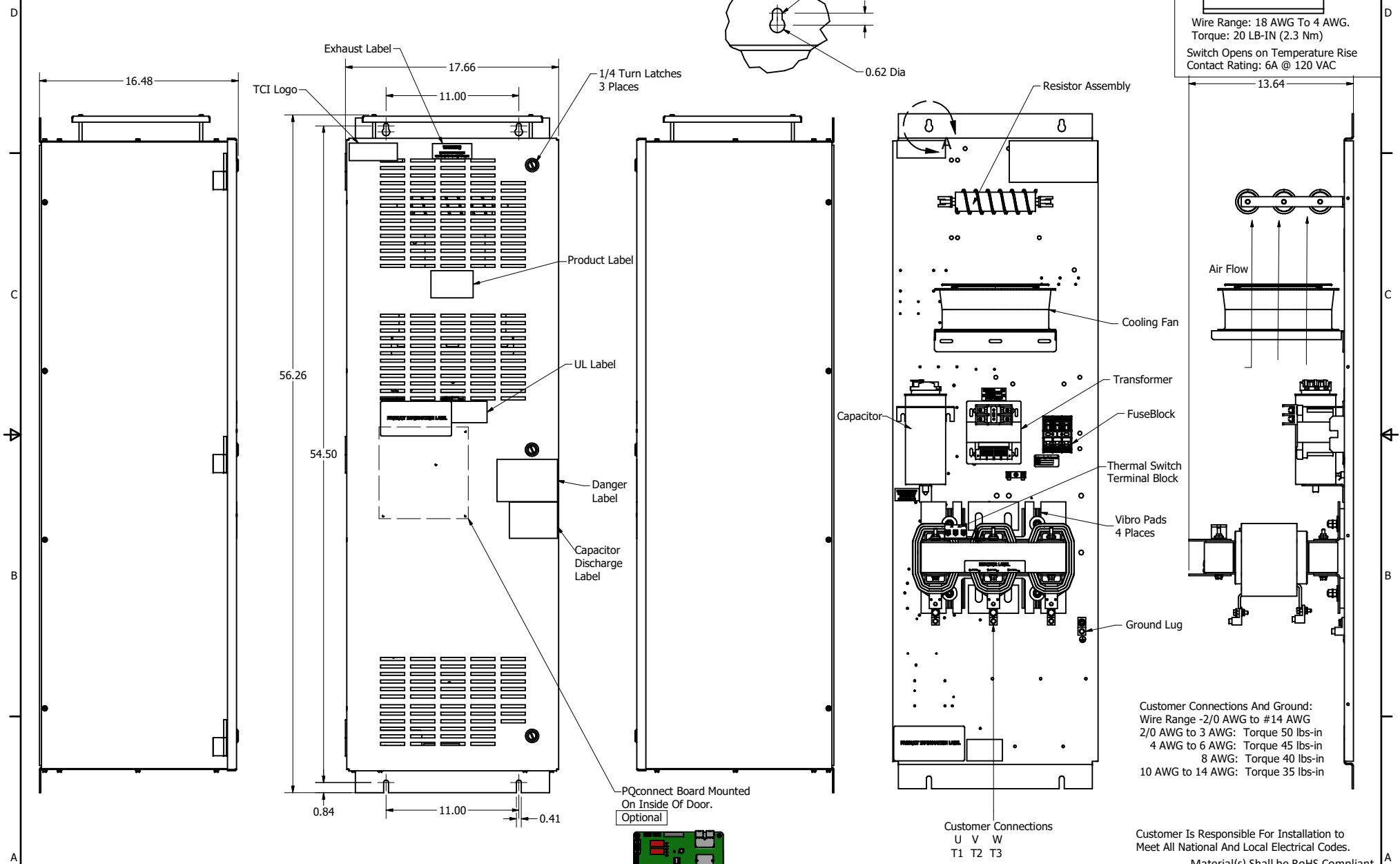
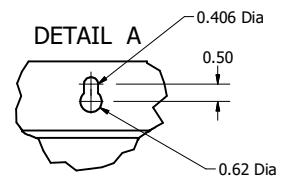
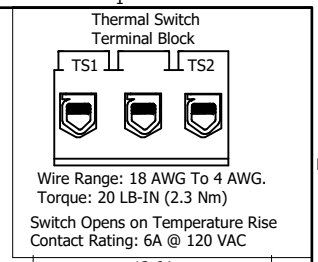


| SineWave Part Number | Schematic Drawing# | Approx Weight (LBS) |
|----------------------|--------------------|---------------------|
| KMG110A01A           | 24281-3A           | 279                 |
| KMG110A01P           | 24281-3P           | 280                 |

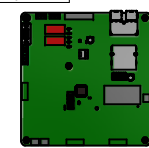
| HorsePower (HP) | kVar | Max Amps | Voltage (V) | HZ | Phase |
|-----------------|------|----------|-------------|----|-------|
| 75              | 10   | 110      | 480         | 60 | 3     |



Customer Connections And Ground:  
Wire Range -2/0 AWG to #14 AWG  
2/0 AWG to 3 AWG: Torque 50 lbs-in  
4 AWG to 6 AWG: Torque 45 lbs-in  
8 AWG: Torque 40 lbs-in  
10 AWG to 14 AWG: Torque 35 lbs-in

Customer Is Responsible For Installation to Meet All National And Local Electrical Codes.

Material(s) Shall be RoHS Compliant



TCl, LLC CLAIMS PROPRIETARY RIGHTS IN THE MATERIAL HEREIN DISCLOSED. IT IS SUPPLIED WITHOUT PREJUDICE TO ANY PATENT RIGHTS OF TCl AND MAY NOT BE REPRODUCED OR USED TO MANUFACTURE ANYTHING SHOWN THEREIN WITHOUT WRITTEN PERMISSION FROM TCl.

| ID | ADD PQconnect Board | 6/17/2020 | DSW |
|----|---------------------|-----------|-----|
| NO | REVISION            | DATE      | BY  |

| TOLERANCES (EXCEPT AS NOTED) |                         |
|------------------------------|-------------------------|
| DECIMAL                      | .XX ± .25<br>.XXX ± .10 |
| FRACTIONAL                   | ± 1/16                  |
| ANGULAR                      | ± 1°                    |

**TCl** W132 N10611 Grant Drive  
Germantown, WI 53022

KMG110A01- SineWave Filter  
Enclosed Type 1, 75HP, 480V

DSW BY DATE 10/07/2014 104358DG  
SCALE: 1/5.5